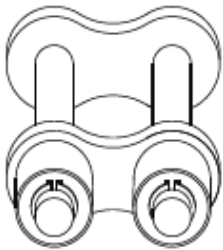


This type of conveyor chain are used for transporting parts, plates, pallets etc., which rests on the accumulator roller while the chain moves at a constant linear speed.

Chain No.	Pitch (P)	Width Between inner plates (W) (Min)	Width of Outboard Roller (b1)	Roller Dia (D) (Max)	Pin Dia (d) (Max)	Pin length (A) (Max)	Center Distance (E)	Conveyor Rollers		Avg. Weight Per Metre (Kg)	Tensile Strength (KN) (Min)	
								Dia (D1) (Max)	Material			
									Steel			Plastic
D08301OB02	12.70	7.75	4.30	8.51	4.45	27.25	19.10	16.00	✓	✓	1.31	18.00
D12001OB01	19.05	11.68	11.10	12.07	5.72	48.00	31.50	24.00	✓	✓	2.98	29.00
D12001OB02	19.05	11.68	7.50	12.07	5.72	40.25	27.00	28.00	✓	✓	2.53	29.00
D12001OB03	19.05	11.68	8.80	12.07	5.72	43.00	29.20	26.00	✓	✓	2.12	29.00
D16001OB01	25.40	17.02	12.50	15.88	8.27	65.25	45.00	38.50	✓	✓	5.64	56.88

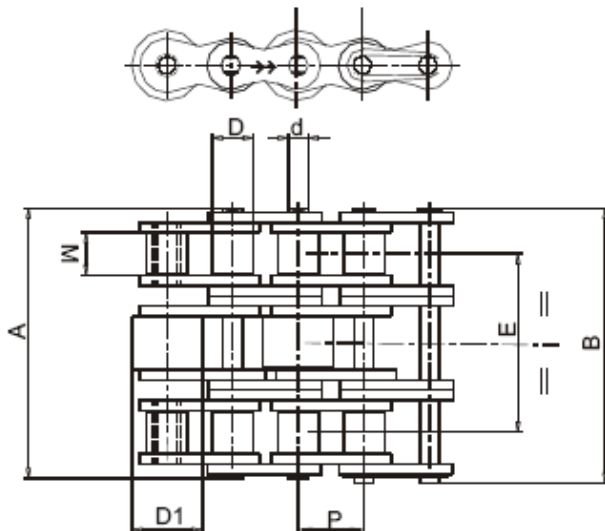
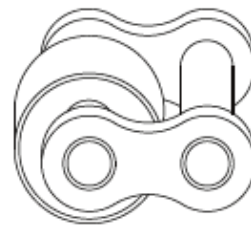
A



B



C



Chain No.	Pitch (P)	Width Between inner plates (W) (Min)	Roller Dia (D) (Max)	Pin Dia (d) (Max)	Pin length (A) (Max)	Width Over Joint Fasteners (B) (Max)	Center Distance (E)	Conveyor Rollers			Avg. Weight Per Metre (Kg)	Tensile Strength (KN) (Min)
								Dia (D1) (Max)	Material			
									Steel	Plastic		
D083030003	12.70	7.75	8.51	4.45	44.90	46.75	27.84	16.00	✓	X	2.33	47.50
D120030001	19.05	11.68	12.07	5.72	61.70	63.00	38.92	22.00	✓	X	3.42	86.70
D120030002	19.05	11.68	12.07	5.72	61.72	63.00	38.92	28.00	✓	X	4.04	86.70
D160030001	25.40	17.02	15.88	8.28	99.90	101.50	63.76	38.50	✓	X	10.63	160.00
D160030002	25.40	17.02	15.88	8.28	99.90	101.50	63.76	27.00	✓	X	9.25	160.00

Note: Special requirements of 'E' and 'D1' can be made on request